



Hortus Botanicus Lodziensis

INDEX SEMINUM 2023

Hortus Botanicus Lodziensis
INDEX SEMINUM 2023

Head of the Botanic Garden in Lodz
dr Dorota Mańkowska

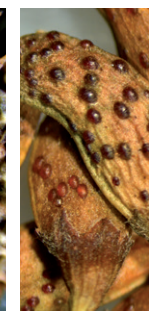
Curator of the seed collection
mgr Aleksandra Rosochacka



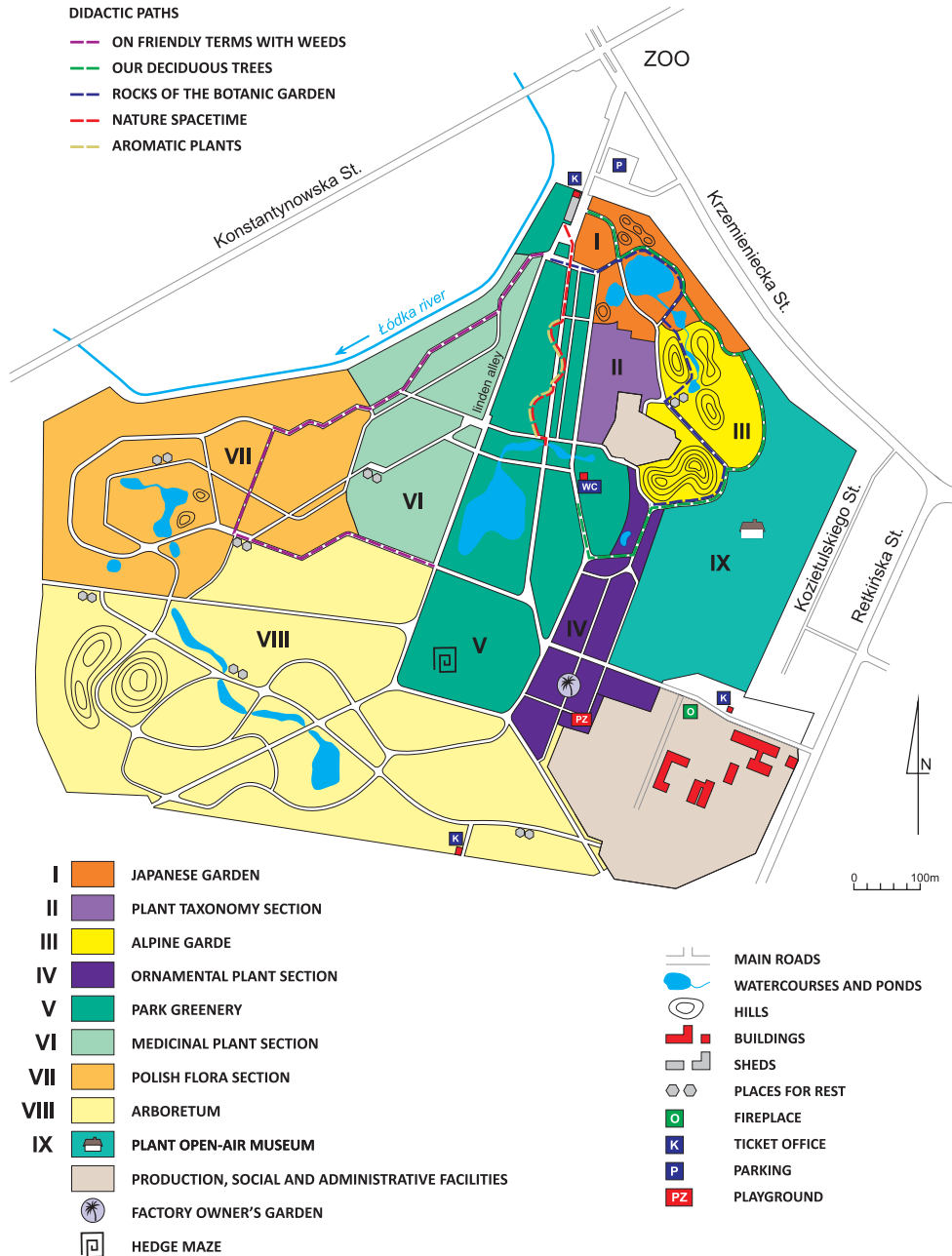
OGRÓD BOTANICZNY W ŁODZI

Address:
OGRÓD BOTANICZNY
ZARZĄD ZIELENI MIEJSKIEJ
ul. Krzemieniecka 36/38
94-303 Łódź
POLAND

Phone: +48 42 688 44 20
E-mail: sekretariat@botaniczny.lodz.pl
www.botaniczny.lodz.pl
Facebook:
www.facebook.com/OgrodBotanicznyLodz



The Botanic Garden in Lodz



Geographical location of the Botanic Garden:

Latitude: 51°44'30" N

Longitude: 19°24'30" E

Altitude: 187 m above sea level

Garden area: 67 ha



Climatic data:

Meteorological data for the period 2002 to 2021	Date
Annual average air temperature: +9,1°C	
Maximum air temperature: +37,0°C	08.08.2013
Minimum air temperature: -30,2°C	23.01.2006
Average annual precipitation: 580,1 mm	

Meteorological data for 2022	Date
Annual average air temperature: +8,9°C*	
Maximum air temperature: +36,2°C*	01.07.2022
Minimum air temperature: -10,7°C*	19.12.2022
Annual precipitation: 565,1 mm	

The climatic data come from the meteorological station Lodz-Lublinek from the Institute of Meteorology and Water Management (IMGW) and from Department of Meteorology and Climatology University of Lodz*.

The Botanic Garden in Lodz is located in the western part of the city and covers an area of 67 hectares. The garden was opened to the public in 1973. The Garden's plant collection consists of over 3700 taxa which are exhibited in the thematic sections: japanese garden, plant taxonomy section, alpine garden, ornamental plant section, park greenery, medicinal plant section, polish flora section, arboretum and the Open-air Plant Museum (with traditional rural garden and orchard). The biggest attraction of the Garden are: a collection of about 60 000 tulips forming in late april picturesque carpet, a collection of peonies and daylilies represented by many varieties, collection of medicinal plants, lilacs, hydrangeas, ornamental apple trees and many others. In the Garden there are several educational paths which allow visitors to explore the mysteries of nature. One of the most popular attraction of the Botanic Garden is also the hedge maze. A new attraction which was created in 2023 is the Factory Owner's Garden related to the history of Lodz city.

The Botanic Garden has also an interesting collection of greenhouse plants (2500 taxa), which is presented in the Palm House. There are three pavilions: subtropical flora, cacti and other succulents and tropical flora with the oldest palm trees in Poland. The integral part of the Palm House is a Didactic Garden which has a lot of plant rarities, especially shrubs and trees.

The main role of the Garden is education and popularization of horticultural, botanic and ecological knowledge, as well as being a great place for rest and walks. Garden staff conduct a variety of educational activities such as workshops, classes and guided tours for children and adults. During each year there are more than 20 organized thematic exhibitions and outdoor events. A very important role of the Garden is also rare and endangered plant species conservation.



The japanese garden in the October sun



The 50th anniversary celebrations of the Botanic Garden in Lodz in 2023



Traditional rural garden next to the cottage house at the Open-air Plant Museum



Installation created during the wicker plein air in 2023



„Fruits, vegetables and flowers” - the every year exhibition



The exhibition of plants in Christmas traditions



The exhibition of carnivorous plants in the Palm House



The Factory owner's Garden - the new part of the collection of ornamental plants section



The alpine garden in autumn

All listed seeds were collected from plants cultivated outdoors in the Botanic Garden in Lodz in the years 2021-2023. The detailed information about previous origin (source) of plant material will be sent with seeds.

ACANTHACEAE

1. *Acanthus hungaricus* (Borbás) Baen.

ACERACEAE

2. *Acer campestre* L.
3. *Acer griseum* (Franch.) Pax
4. *Acer platanoides* L.

ANACARDIACEAE

5. *Rhus glabra* 'Laciniata'

APIACEAE

6. *Angelica archangelica* L.
7. *Anthriscus sylvestris* (L.) Hoffm.
8. *Eryngium caeruleum* M.Bieb.
9. *Eryngium campestre* L.
10. *Eryngium giganteum* M.Bieb.
11. *Eryngium yuccifolium* Michx.
12. *Foeniculum vulgare* Mill.
13. *Myrrhis odorata* (L.) Scop.

APOCYNACEAE

14. *Vincetoxicum hirundinaria* Medik.

AQUIFOLIACEAE

15. *Ilex aquifolium* L.

ARACEAE

16. *Arisaema amurense* Maxim.
17. *Arum italicum* 'Marmoratum'

ARALIACEAE

18. *Aralia elata* (Miq.) Seem.

ASPARAGACEAE

19. *Asparagus officinalis* L.

ASCLEPIADACEAE

20. *Asphodeline lutea* Rchb.
21. *Kniphofia citrina* Baker
22. *Kniphofia triangularis* Kunth

ASTERACEAE

23. *Achillea filipendulina* 'Parker's Variety'
24. *Achillea macrophylla* L.
25. *Achillea millefolium* L.

26. *Achillea nobilis* L.
27. *Achillea ptarmica* L.
28. *Anaphalis margaritacea* (L.) Benth.
29. *Anthemis tinctoria* L.
30. *Arctium lappa* L.
31. *Arnica sachalinensis* (Regel) A.Gray
32. *Aster tongolensis* Franch.
33. *Centaurea pulcherrima* Willd.
34. *Centaurea scabiosa* L.
35. *Cichorium intybus* L.
36. *Coreopsis grandiflora* Nutt. ex Chapm.
37. *Coreopsis lanceolata* L.
38. *Coreopsis palmata* Nutt.
39. *Coreopsis verticillata* 'Grandiflora'
40. *Cynara cardunculus* L.
41. *Echinacea purpurea* (L.) Moench
42. *Echinops horridus* Desf.
43. *Echinops humilis* M.Bieb.
44. *Echinops sphaerocephalus* L.
45. *Erigeron speciosus* DC.
46. *Eutrochium maculatum* (L.) E.E.Lamont
47. *Gaillardia picta* Sweet
48. *Helianthemum apenninum* 'Roseum'
49. *Helianthemum nummularium* Mill.
50. *Helianthemum violaceum* (Cav.) Pers.
51. *Inula helenium* L.
52. *Liatris x platylepis* (Schumann) Small
53. *Liatris pycnostachya* Michx.
54. *Liatris spicata* (L.) Willd.
55. *Liatris spicata* 'Alba'
56. *Ligularia przewalskii* (Maxim.) Diels
57. *Ligularia veitchiana* (Hemsl.) Greenm.
58. *Rudbeckia hirta* L.
59. *Rudbeckia triloba* L.
60. *Silybum marianum* (L.) Gaertn.
61. *Solidago virgaurea* L.
62. *Stachys aegyptiaca* Pers.
63. *Stachys byzantina* K.Koch
64. *Tanacetum parthenium* (L.) Sch.Bip.
65. *Tanacetum vulgare* L.
66. *Vernonia noveboracensis* (L.) Willd.

BERBERIDACEAE

67. *Berberis julianae* C.K.Schneid.
68. *Berberis koreana* Palib.
69. *Berberis vulgaris* L.

BETULACEAE

70. *Alnus glutinosa* (L.) Gaertn.
 71. *Alnus incana* (L.) Moench.
 72. *Betula alleghaniensis* Britton
 73. *Betula fruticosa* Pall.
 74. *Betula obscura* Kotula

BIGNONIACEAE

75. *Catalpa bignonioides* Walter
 76. *Catalpa xerubescens* Carrière
 77. *Catalpa fargesii* fo. *duclouxii* (Dode) Gilmour
 78. *Catalpa ovata* G. Don
 79. *Catalpa speciosa* Warder ex Engelm.

BORAGINACEAE

80. *Anchusa officinalis* L.
 81. *Lithospermum officinale* L.
 82. *Phacelia tanacetifolia* Benth.

BRASSICACEAE

83. *Arabis pumila* Jacq.
 84. *Erysimum cheiri* Crantz
 85. *Isatis tinctoria* L.
 86. *Odontarrhena argentea* Ledeb.

CAESALPINIACEAE

87. *Cercis siliquastrum* L.
 88. *Gleditsia triacanthos* L.
 89. *Gleditsia triacanthos* var. *inermis* Willd.
 90. *Gymnocladus dioica* (L.) K. Koch

CAMPANULACEAE

91. *Campanula persicifolia* L.
 92. *Campsis radicans* (L.) Bureau
 93. *Lobelia siphilitica* L.
 94. *Platycodon grandiflorus* (Jacq.) A. DC.
 95. *Platycodon grandiflorus* 'Albus'

CANNABACEAE

96. *Humulus lupulus* L.

CAPRIFOLIACEAE

97. *Cephalaria alpina* (L.) Roem. & Schult.
 98. *Cephalaria gigantea* (Ledeb.) Bobrov
 99. *Kolkwitzia amabilis* Graebn.
 100. *Lonicera alpigena* L.
 101. *Lonicera maackii* (Rupr.) Maxim.
 102. *Lonicera vesicaria* Kom.

103. *Sambucus nigra* L.
 104. *Viburnum carlesii* Hemsl.
 105. *Viburnum edule* (Michx.) Raf.
 106. *Viburnum dilatatum* Thunb.
 107. *Viburnum opulus* L.
 108. *Viburnum opulus* 'Xanthocarpum'
 109. *Viburnum rhytidophyllum* Hemsl.

CARICACEAE

110. *Carica papaya* L.

CARYOPHYLLACEAE

111. *Dianthus tianschanicus* Schischk.
 112. *Gypsophila paniculata* L.
 113. *Lychnis coronaria* (L.) Desr.
 114. *Lychnis coronaria* 'Alba'
 115. *Lychnis flos-cuculi* L.
 116. *Saponaria officinalis* L.
 117. *Silene compacta* Fisch.
 118. *Silene otites* Sm.
 119. *Silene samojedorum* (Sambuk) Oxelman

CELASTRACEAE

120. *Euonymus europaeus* L.
 121. *Euonymus maackii* Rupr.
 122. *Euonymus macropterus* Rupr.
 123. *Euonymus nanus* M. Bieb.
 124. *Euonymus sacrosanctus* Koidz.

CLUSIACEAE

125. *Hypericum androsaemum* L.
 126. *Hypericum maculatum* Crantz
 127. *Hypericum olympicum* L.
 128. *Hypericum orientale* L.
 129. *Hypericum perforatum* L.

CONVALLARIACEAE

130. *Convallaria majalis* L.

CORNACEAE

131. *Cornus amomum* Mill.
 132. *Cornus kousa* var. *chinensis* (Osborn) Q.Y. Xiang
 133. *Cornus mas* L.
 134. *Cornus sanguinea* L.

CORYLACEAE

135. *Carpinus betulus* L.
 136. *Carpinus caroliniana* Walter

137. *Carpinus japonica* Blume
 138. *Corylus colurna* L.
 139. *Ostrya carpinifolia* Scop.

CRASSULACEAE

140. *Sedum aizoon* L.
 141. *Sedum kamtschaticum* Fisch. et C.A. Mey.

CUCURBITACEAE

142. *Bryonia dioica* Jacq.

CUPRESSACEAE

143. *Calocedrus decurrens* (Torr.) Florin
 144. *Chamaecyparis lawsoniana* (A. Murray bis) Parl. T
 145. *Juniperus sabina* L.
 146. *Platycladus orientalis* (L.) Franco
 147. *Thuja occidentalis* L.
 148. *Thuja plicata* Donn ex D. Don
 149. *Thujopsis dolabrata* (Thunb. ex L.f.) Siebold et Zucc.

DIPSACACEAE

150. *Scabiosa japonica* var. *alpina* Takeda
 151. *Scabiosa ochroleuca* L.

DRYOPTERIDACEAE

152. *Cyrtomium fortunei* J. Sm.

ELAEAGNACEAE

153. *Elaeagnus angustifolia* L.
 154. *Hippophaë rhamnoides* L.

EUCOMIACEAE

155. *Eucommia ulmoides* Oliv.

EUPHORBIACEAE

156. *Ricinus communis* L.
 157. *Securinega suffruticosa* (Pall.) Rehder

FABACEAE

158. *Baptisia australis* (L.) R. Br.
 159. *Galega officinalis* L.
 160. *Genista tinctoria* L.
 161. *Glycyrrhiza glabra* L.
 162. *Laburnum alpinum* (Mill.) Bercht. ex J. Presl
 163. *Laburnum anagyroides* Medik.

164. *Lespedeza bicolor* Turcz.
 165. *Ononis spinosa* L.
 166. *Wisteria floribunda* (Willd.) DC.

FAGACEAE

167. *Castanea sativa* Mill.
 168. *Fagus sylvatica* L.
 169. *Quercus cerris* L.
 170. *Quercus libani* Olivier
 171. *Quercus pyrenaica* Willd.
 172. *Quercus robur* L.

HAMAMELIDACEAE

173. *Hamamelis vernalis* Sarg.

HEMEROCALLIDACEAE

174. *Hemerocallis fulva* var. *aurantiaca* (Baker) M. Hotta

HIPPOCASTANACEAE

175. *Aesculus glabra* Willd.
 176. *Aesculus glaucescens* Sarg.
 177. *Aesculus hippocastanum* L.
 178. *Aesculus ×hybrida* DC.
 179. *Aesculus parviflora* Walter
 180. *Aesculus turbinata* Blume

HOSTACEAE

181. *Hosta sieboldiana* (Hook.) Engl.

HYACINTHACEAE

182. *Muscari armeniacum* H.J. Veitch

JUGLANDACEAE

183. *Juglans ailantifolia* Carrière
 184. *Juglans nigra* L.
 185. *Pterocarya fraxinifolia* Spach
 186. *Pterocarya stenoptera* C. DC.

JUNCACEAE

187. *Luzula sylvatica* (Huds.) Gaudin

LAMIACEAE

188. *Agastache nepetoides* (L.) Kuntze
 189. *Betonica officinalis* L.
 190. *Hyssopus officinalis* L.
 191. *Lavandula angustifolia* Mill.
 192. *Lavandula angustifolia* 'Dwarf Blue'
 193. *Lavandula angustifolia* 'Rosea'

194. *Leonurus cardiaca* L.
 195. *Marrubium vulgare* L.
 196. *Monarda didyma* L.
 197. *Nepeta cataria* L.
 198. *Nepeta grandiflora* M.Bieb.
 199. *Physostegia virginiana* 'Summer Snow'
 200. *Prunella grandiflora* (L.) Scholler
 201. *Prunella grandiflora* 'Alba'
 202. *Prunella xwebbiana* Paul
 203. *Salvia hispanica* L.
 204. *Salvia nemorosa* L.
 205. *Salvia officinalis* L.
 206. *Salvia pratensis* L.
 207. *Salvia sclarea* L.
 208. *Salvia verticillata* L.
 209. *Scutellaria baicalensis* Georgi
 210. *Stachys byzantina* K.Koch
 211. *Stachys macrantha* (K.Koch) Stearn
 212. *Teucrium hircanicum* L.

LARDIZABALACEAE

213. *Akebia quinata* (Houtt.) Decne.
 214. *Decaisnea fargesii* Franch.

LYTHRACEAE

215. *Lythrum salicaria* L.

MAGNOLIACEAE

216. *Magnolia acuminata* (L.) L.
 217. *Magnolia kobus* DC.
 218. *Magnolia tripetala* (L.) L.

MALVACEAE

219. *Alcea rosea* 'Nigra'
 220. *Althaea officinalis* L.
 221. *Kitaibelia vitifolia* Willd.
 222. *Malva neglecta* Wallr.
 223. *Sida hermaphrodita* (L.) Rusby

MELANTHIACEAE

224. *Veratrum nigrum* L.

MYRICACEAE

225. *Myrica pensylvanica* Mirb.

OLEACEAE

226. *Fontanesia phillyreoides* subsp. *fortunei* (Carrière) Yalt.
 227. *Fraxinus excelsior* L.

228. *Fraxinus ornus* L.
 229. *Ligustrum obtusifolium* Siebold et Zucc.
 230. *Ligustrum vulgare* L.
 231. *Ligustrum vulgare* 'Chlorocarpum'

ONAGRACEAE

232. *Chamaenerion angustifolium* (L.) Scop.
 233. *Oenothera biennis* L.

OSMUNDACEAE

234. *Osmunda regalis* 'Purpurascens'

PAEONIACEAE

235. *Paeonia anomala* L.
 236. *Paeonia daurica* Andrews
 237. *Paeonia lactiflora* Pall.
 238. *Paeonia mlokosewitschii* Lomakin
 239. *Paeonia peregrina* Mill.
 240. *Paeonia tenuifolia* L.

PAPAVERACEAE

241. *Papaver orientale* L.
 242. *Papaver rhoeas* L.

PHYTOLACCACEAE

243. *Phytolacca americana* L.

PINACEAE

244. *Larix decidua* Mill.
 245. *Picea abies* (L.) H.Karst.
 246. *Picea abies* f. *chlorocarpa* Th.Fr.
 247. *Picea asperata* Mast.
 248. *Picea mariana* (Mill.) Britton, Sterns et Poggenb.
 249. *Picea obovata* Ledeb.
 250. *Picea omorika* (Pančić) Purk.
 251. *Picea pungens* Engelm.
 252. *Pinus mugo* Turra
 253. *Pinus ponderosa* Douglas ex Lawson et C.Lawson
 254. *Pinus strobus* L.
 255. *Pinus sylvestris* L.

PLANTAGINACEAE

256. *Globularia repens* Lam.
 257. *Penstemon cardinalis* Wootton & Standl.
 258. *Penstemon grandiflorum* Nutt.
 259. *Penstemon hirsutus* (L.) Willd.
 260. *Penstemon serrulatus* Menzies ex Sm.

261. *Penstemon wilcoxii* Rydb.
 262. *Plantago lanceolata* L.
 263. *Plantago major* L.
 264. *Plantago major* 'Purpurea'

PLATANACEAE

265. *Platanus xhispanica* Mill. ex Münchh.
 266. *Platanus occidentalis* L.
 267. *Platanus orientalis* L.

POACEAE

268. *Phleum commutatum* Gaudin

POLEMONIACEAE

269. *Polemonium caeruleum* L.
 270. *Eriogonum umbellatum* Torr.

POLYGONACEAE

271. *Rumex acetosa* L.
 272. *Rumex hydrolapathum* Huds.

PRIMULACEAE

273. *Dodecatheon meadia* L.
 274. *Primula denticulata* Sm.
 275. *Primula elatior* (L.) Hill
 276. *Primula japonica* A. Gray
 277. *Primula ruprechtii* Kusn.

RANUNCULACEAE

278. *Actaea dahurica* Turcz. ex Fisch. & C.A. Mey.
 279. *Actaea europaea* (Schipcz.) J.Compton
 280. *Anemone hupehensis* (Lemoine) Lemoine
 281. *Anemone tomentosa* (Maxim.) C.Pei
 282. *Anemone vitifolia* Buch.-Ham. ex DC.
 283. *Aquilegia alpina* L.
 284. *Aquilegia ecalcarata* Maxim.
 285. *Aquilegia vulgaris* L.
 286. *Clematis alpina* (L.) Mill
 287. *Clematis heracleifolia* DC.
 288. *Clematis mandschurica* Rupr.
 289. *Delphinium elatum* L.
 290. *Eranthis hyemalis* Salisb.
 291. *Helleborus argutifolius* Viv.
 292. *Nigella damascena* L.
 293. *Thalictrum dipterocarpum* Franch.
 294. *Thalictrum minus* L.

RHAMNACEAE

295. *Frangula alnus* L.
 296. *Rhamnus cathartica* L.

ROSACEAE

297. *Acaena alpina* Poepp.
 298. *Acaena anserinifolia* (J.R.Forst. & G.Forst.) J.B.Armstr.
 299. *Agrimonia eupatoria* L.
 300. *Agrimonia striata* L.
 301. *Alchemilla plicatula* Gand.
 302. *Alchemilla xanthochlora* Rothm.
 303. *Aronia melanocarpa* (Michx.) Elliott
 304. *Aruncus aethusifolius* Nakai
 305. *Chaenomeles japonica* (Thunb.) Lindl.
 306. *Chaenomeles speciosa* (Sweet) Nakai
 307. *Chaenomeles xsuperba* 'Vesuvius'
 308. *Cotoneaster adpressus* var. *praecox* Bois & P.Berthault
 309. *Cotoneaster boisianus* Klotz
 310. *Cotoneaster bullatus* Bois
 311. *Cotoneaster buxifolius* Wall. ex Lindl.
 312. *Cotoneaster dammeri* C.K.Schneid.
 313. *Cotoneaster dielsianus* E.Pritz. ex Diels
 314. *Cotoneaster foveolatus* Rehder et E.H.Wilson
 315. *Cotoneaster franchetii* var. *cinerascens* Rehder
 316. *Cotoneaster giraldii* Flinck et B. Hylmö et G. Klotz
 317. *Cotoneaster hissaricus* Pojark.
 318. *Cotoneaster hjelmqvistii* Flinck et B.Hylmö
 319. *Cotoneaster horizontalis* Decne.
 320. *Cotoneaster microphyllus* Wall. ex Lindl.
 321. *Cotoneaster niger* (Wahlb.) Fr.
 322. *Cotoneaster splendens* Flinck et Hylmö
 323. *Cotoneaster wardii* W.W.Sm.
 324. *Cotoneaster zabelii* C.K.Schneid.
 325. *Crataegus calpodendron* (Ehrh.) Medik.
 326. *Crataegus crus-galli* L.
 327. *Crataegus intricata* Lange
 328. *Crataegus laevigata* (Poir.) DC.
 329. *Crataegus monogyna* Jacq.
 330. *Crataegus punctata* 'Aurea'
 331. *Cydonia oblonga* Mill.
 332. *Dryas octopetala* L.
 333. *Filipendula palmata* (Pall.) Maxim.
 334. *Filipendula ulmaria* (L.) Maxim.

- 335. *Filipendula vulgaris* Moench
- 336. *Geum triflorum* Pursh
- 337. *Geum urbanum* L.
- 338. *Gillenia trifoliata* (L.) Moench
- 339. *Malus glaucescens* Rehder
- 340. *Photinia villosa* (Thunb.) DC.
- 341. *Physocarpus opulifolius* (L.) Maxim.
- 342. *Potentilla arguta* Pursh
- 343. *Potentilla erecta* (L.) Raeusch.
- 344. *Potentilla fulgens* Wall. ex Hook.
- 345. *Potentilla grandiflora* L.
- 346. *Potentilla recta* L.
- 347. *Potentilla rupestris* var. *pygmaea* Duby
- 348. *Prinsepia sinensis* (Oliv.) Oliv. ex Bean
- 349. *Prinsepia uniflora* Batalin
- 350. *Prunus spinosa* L.
- 351. *Pyracantha coccinea* var. *kuntayi*
- 352. *Pyrus salicifolia* Pall.
- 353. *Rhodothypos scandens* (Thunb.) Makino
- 354. *Rosa agrestis* Savi
- 355. *Rosa arvensis* Huds.
- 356. *Rosa blanda* Aiton
- 357. *Rosa canina* L.
- 358. *Rosa corymbifera* Borkh.
- 359. *Rosa davurica* Pall.
- 360. *Rosa dumalis* Bechst.
- 361. *Rosa filipes* Rehder et E.H.Wilson
- 362. *Rosa gallica* L.
- 363. *Rosa glauca* Pourr.
- 364. *Rosa inodora* Fr.
- 365. *Rosa jundzillii* Besser
- 366. *Rosa maximowicziana* Regel
- 367. *Rosa moschata* Mill.
- 368. *Rosa moyesii* Hemsl. et E.H.Wilson
- 369. *Rosa multiflora* 'Inermis'
- 370. *Rosa nutkana* Pall.
- 371. *Rosa pimpinellifolia* L.
- 372. *Rosa roxburghii* Tratt.
- 373. *Rosa roxburghii* var. *hirtula* Rehder et E.H. Wilson
- 374. *Rosa rubiginosa* L.
- 375. *Rosa setigera* Michx.
- 376. *Rosa stylosa* Desv.
- 377. *Sanguisorba officinalis* L.
- 378. *Sorbus discolor* (Maxim.) Maxim.
- 379. *Sorbus domestica* L.
- 380. *Sorbus gracilis* K.Koch
- 381. *Sorbus intermedia* (Ehrh.) Pers.

RUBIACEAE

- 382. *Cephalanthus occidentalis* L.

RUTACEAE

- 383. *Dictamnus albus* L.
- 384. *Phellodendron amurense* Rupr.
- 385. *Ptelea trifoliata* L.
- 386. *Ruta graveolens* L.

SAXIFRAGACEAE

- 387. *Bergenia crassifolia* (L.) Fritsch
- 388. *Heuchera chlorantha* Piper
- 389. *Heuchera micrantha* var. *diversifolia* (Rydb.) Rosend., Butters et Lakela
- 390. *Heuchera pilosissima* Benth.
- 391. *Heuchera richardsonii* R.Br.
- 392. *Heuchera sanguinea* Engelm.
- 393. *Mitella ovalis* Greene
- 394. *Tiarella cordifolia* L.

SCHISANDRACEAE

- 395. *Schisandra chinensis* (Turcz.) Bcrassulql.

SCROPHULARIACEAE

- 396. *Digitalis grandiflora* Mill.
- 397. *Digitalis lanata* Ehrh.
- 398. *Digitalis obscura* L.
- 399. *Paulownia tomentosa* (Thunb.) Steud.
- 400. *Scrophularia nodosa* L.
- 401. *Verbascum phlomoides* L.
- 402. *Verbascum phoeniceum* L.
- 403. *Verbascum thapsus* L.
- 404. *Veronica longifolia* L.
- 405. *Veronica officinalis* L.
- 406. *Veronica spicata* L.
- 407. *Veronica spicata* subsp. *incana* (L.) Walters
- 408. *Veronica spicata* subsp. *orchidea* (Crantz) Hayek

SOLANACEAE

- 409. *Atropa belladonna* L.
- 410. *Datura stramonium* L.
- 411. *Hyoscyamus niger* L.
- 412. *Nicotiana alata* Link et Otto
- 413. *Nicotiana tabacum* L.
- 414. *Physalis alkekengi* L.
- 415. *Physalis peruviana* L.

STAPHYLEACEAE

- 416. *Staphylea colchica* Steven

TAXACEAE

- 417. *Taxus baccata* L.

TILIACEAE

- 418. *Tilia americana* 'Macrophylla'
- 419. *Tilia cordata* Mill.
- 420. *Tilia platyphyllos* Scop.

ULMACEAE

- 421. *Celtis australis* L.

- 422. *Celtis glabrata* Steven ex Planch.

- 423. *Celtis occidentalis* L.

VERBENACEAE

- 424. *Callicarpa japonica* Thunb.
- 425. *Verbena hastata* L.
- 426. *Verbena officinalis* L.

VITACEAE

- 427. *Ampelopsis brevipedunculata* (Maxim.) Trautv.



Traditional hive in a log at the Open-air Plant Museum



The sensory path and propagating plants educational workshops

Index Seminarium 2023 is also available on our website: www.botaniczny.lodz.pl and on BGCI Index Seminarium Platform

Nomenclature:

- Brummitt R.K., Powell C.E. ed. 1992. Authors of Plant Names. Royal Botanical Gardens, Kew.
- Bugała W. 2000. Drzewa i krzewy. PWRiL, Warszawa.
- Bugała W. 2000. Drzewa i krzewy iglaste. PWRiL, Warszawa.
- Gawryś W. 2008. Słownik roślin zielnych łacińsko-polski. Officina Botanica, Kraków.
- Grabowska B., Kubala T. 2011. Encyklopedia bylin. T. I,II. Zysk i S-ka, Poznań.
- Hoffman M.H.A. 2005. List of names of perennials. International standard ENA 2005-2010. Boskoop, Applied Plant Research, The Netherlands.
- Hoffman M.H.A. 2005. List of names of woody plants. International standard ENA 2005-2010. Boskoop, Applied Plant Research, The Netherlands.
- <https://atlas-roslin.pl>
- <https://powo.science.kew.org>
- Krussmann G. 1955. Die Nadelgehölze. Paul Parey, Berlin-Hamburg.
- Krussmann G. 1960. Handbuch der Laubgehölze. Bd. I-II, Paul Parey, Berlin-Hamburg.
- Krussmann G. 1970. Winterharte Gartenstaunden. Paul Parey, Berlin-Hamburg.
- Marcinkowski J. 2002. Byliny ogrodowe. PWRiL, Warszawa.
- Seneta W. 1981. Drzewa i krzewy liściaste. PWN, Warszawa.
- Seneta W. 1991. T I. Drzewa i krzewy liściaste. PWN, Warszawa.
- Seneta W. 1994. T II. Drzewa i krzewy liściaste. PWN, Warszawa.
- Seneta W. 1996. T III. Drzewa i krzewy liściaste. PWN, Warszawa.
- Seneta W., Dolatowski J. 1997. Dendrologia. PWN, Warszawa.
- Tutin T. G. ed. 1964-1976. Flora Europaea Vol. I-IV, Cambr. Univ. Press, Cambridge.
- www.worldfloraonline.org
- www.tropicos.org.



Educational workshops about dye plants at the Open-air Plant Museum



Midsummer Night in the Botanic Garden

Agreement on the supply of plant material

Since the Convention on Biological Diversity (Rio de Janeiro, 1992) entered into force, it has become necessary for botanic gardens to comply in particular with Article 15 (Access to genetic resources), especially in connection with the exchange of plant material.

Accordingly, the garden only passes on plant material under the condition that the user acts in the spirit of the Convention on Biological Diversity. The garden is dedicated to the conservation, sustainable use and research of biological diversity. With regard to the acquisition, maintenance and supply of plant material, the garden therefore expects its partners to act in a manner that is consistent to the letter and the spirit of the Biodiversity Convention on International Trade in Endangered Species (CITES) and in compliance with all relevant conventions and laws relating to the protection of Biological diversity.

Consequently, only those persons and institutions who accept the following conditions will receive plant material from garden's collection:

1. On the basis of this agreement, the material is intended to serve the common good, particularly scientific study, education and the interests of environmental protection.
2. Upon accepting plant material from the garden, the recipient is obliged to document and preserve information relating to the material appropriately.
3. In the event that scientific publications on the plant material provided are produced, the origin of the material is to be cited. In addition, these publications are expected to be sent to the garden automatically, without request.
4. Intended commercial use by the recipient is not covered by this agreement. The commercialization is the object of a separate agreement with the country of origin. This agreement underlies the provisions of the CBD, i. e. the user is obliged to share benefits with the country of origin and to forward relevant information to the authority instructed with the implementation of the CBD.
5. The garden will forward information on the material supply on the request to authority instructed with the implementation of the CBD¹.
6. Plant material may only be supplied on the basis and under the condition of this corresponding agreement.

I accept the above conditions.

Date, Signature

Name and address, stamp

¹in the ideal case the National Focal Point of the country of Botanic Garden

DESIDERATA



OGRÓD BOTANICZNY W ŁODZI

Ogród Botaniczny
Zarząd Zieleni Miejskiej
ul. Krzemieniecka 36/38
94-303 Łódź
Poland

Phone: +48 42 688 44 20, e-mail: sekretariat@botaniczny.lodz.pl
www.botaniczny.lodz.pl; www.facebook.com/OgrodBotanicznyLodz

Your address:

--

Please, limit Your order to 20 different seeds.

Desiderata with the signed Agreement should be sent by mail or by post until 31th May 2024.